

BRUNTON

RESIDENTIAL



LOW GOSFORTH COURT, MELTON PARK, NE3

Offers Over £200,000

BRUNTON

RESIDENTIAL





BRUNTON

RESIDENTIAL



BRUNTON

RESIDENTIAL



FIRST FLOOR APARTMENT | GARAGE | IDEAL FIRST TIME BUY

Brunton Residential are delighted to welcome to the market this simply stunning two bedroom first floor apartment on Low Gosforth Court within the sought after Melton Park, Gosforth with garage in a block, balcony and shared gardens with golf and race course views.

For more information and to book your viewing please call our team on 0191 236 8347.

BRUNTON

RESIDENTIAL



BRUNTON

RESIDENTIAL

Situated on the sought after Low Gosforth Court is this beautiful first floor apartment which would make an ideal first time buy or a secure property for anyone looking to downsize. Briefly comprising communal entrance hallway with stairs to the first floor, apartment hallway with store, two bedrooms, bedroom one with fitted wardrobes. Reconfigured four piece bathroom with stand alone shower, kitchen with floor and wall units and the full depth, dual aspect, lounge diner with floor to ceiling windows on one side and sliding doors on the other giving access to the balcony which overlooks the stunning communal grounds.

Externally there is a garage in a nearby block with remote control up and over door, communal gardens with superb golf and race course views as well as plenty of visitor parking.

Tenure

The agent understands the property to be leasehold. However, this should be confirmed with a licenced legal representative.

Council Tax Band C



BRUNTON

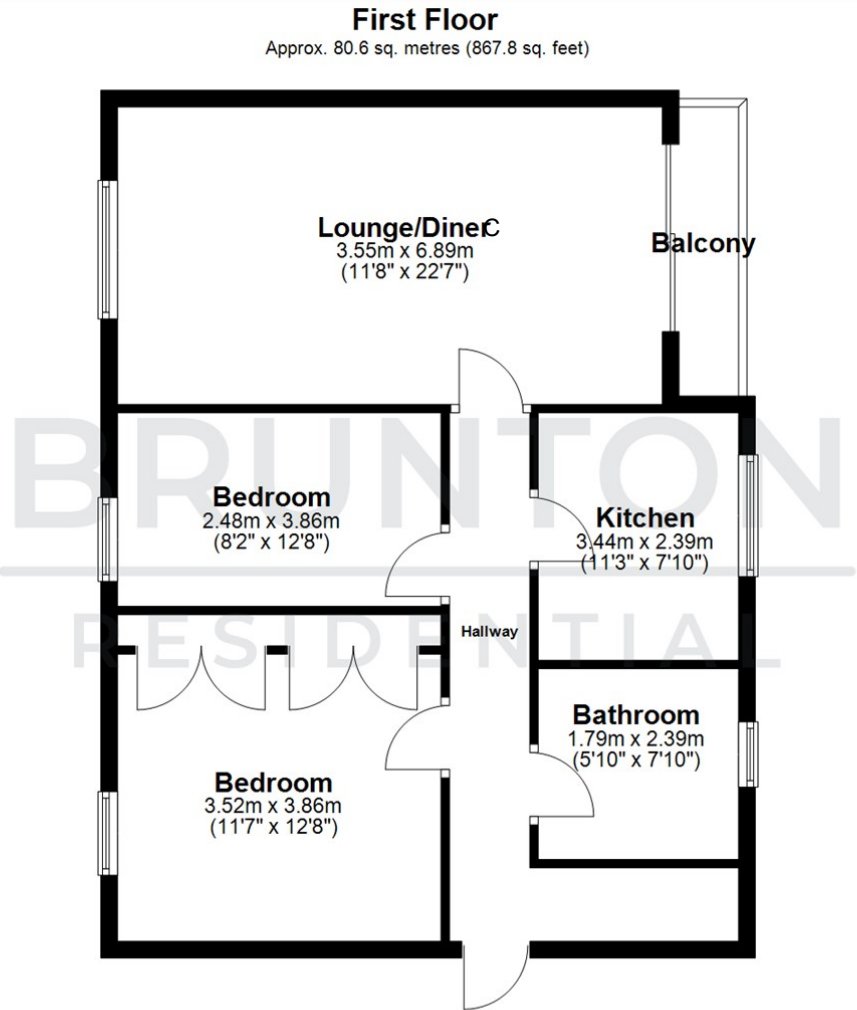
RESIDENTIAL

TENURE : Leasehold

LOCAL AUTHORITY :

COUNCIL TAX BAND : C

EPC RATING : D



All measurements are approximate and are for illustration only.
Plan produced using PlanUp.

